

# Stacking Stecs for Return Shipment

**ZEON**

**Contained Stack  
(6 – 9 Crates)**



**Banded Stack  
(1 – 5 Crates)**



Long Wall  
(L Wall)



Short Wall  
(S Wall)

Base

- If you anticipate returning 5 crates or less at a time, the **banded stack** is the preferred method
- Begin by stacking the bases on top of each other
- You will then stack each set of walls on top of the bases as shown on the next slide

1 – Lay S Wall down with tabs pointing up



2 – Place L Wall on top of S Wall



3 – Place L Wall on top of previous L Wall



4 – Place S Wall on top with tabs point down





- A finished stack of 5 crates will look like the photos below



**It is critical that crates stacked using this method be banded before shipment (as shown) to prevent damage and injury**

- If you anticipate returning 6 crates or more at a time, the **contained stack** is the preferred method
- You can safely stack 9 units in each contained stack
- Benefits
  - This method requires no banding, strapping, or wrapping prior to shipment
  - This method is easier to “stack as you go”

- You will begin with an assembled crate with one L Wall removed



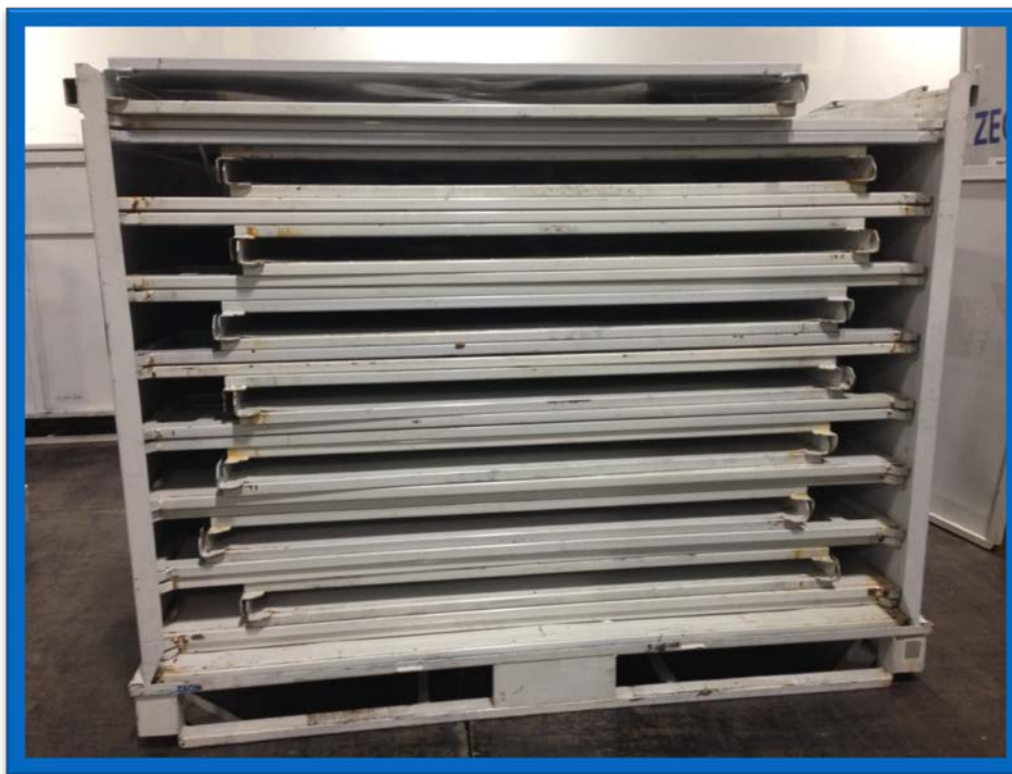


- You will then stack the walls inside the assembled crate



You will stack as follows:

1. L Wall
2. L Wall
3. S Wall (tabs point up)
4. S Wall (tabs point down)
5. Repeat





- Once you have stacked all of the walls inside, add the missing L Wall to close
- Stack the completed unit on top of the bases
- The photo on the left shows 9 steel crates ready for shipment

Your cooperation in returning these crates helps ZEON protect the environment and maintain affordable pricing for customers like you!